

## Description

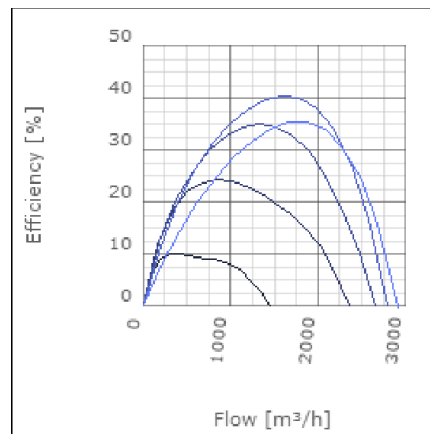
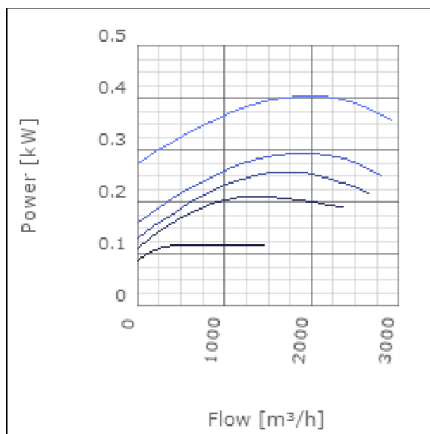
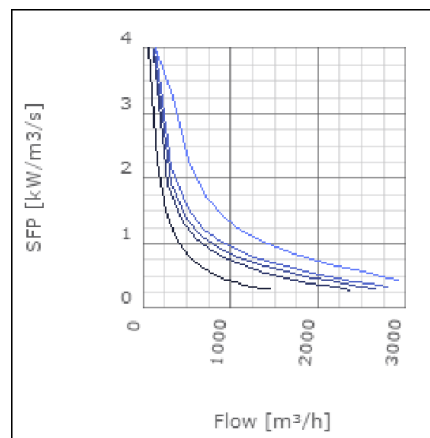
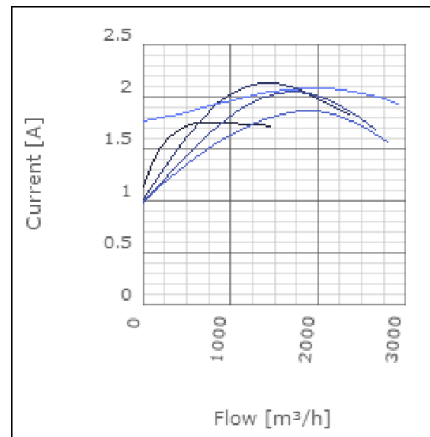
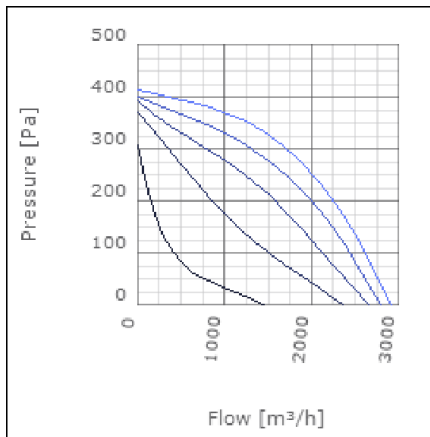
RKB is a range of straight flow in-line centrifugal duct fans designed for rectangular ducts. They are compact, high capacity fans which operate quietly and can be fitted in any position. RKB fans have backward curved impellers and are designed to cope with high pressure and long duct. The fans have a rigid housing made from galvanised steel. They are moisture proof and approved for use in outdoor environments. The motors are maintenance free and protected from overheating by thermo contacts. The impellers only require occasional cleaning. This cleaning is made easy with the RKB's swing out design. All fans are supplied fully wired and ready to fit in a sealed installation unit. The fans are not intended for transporting grinding dust, soot or similar. RKB fans come in 25 sizes.



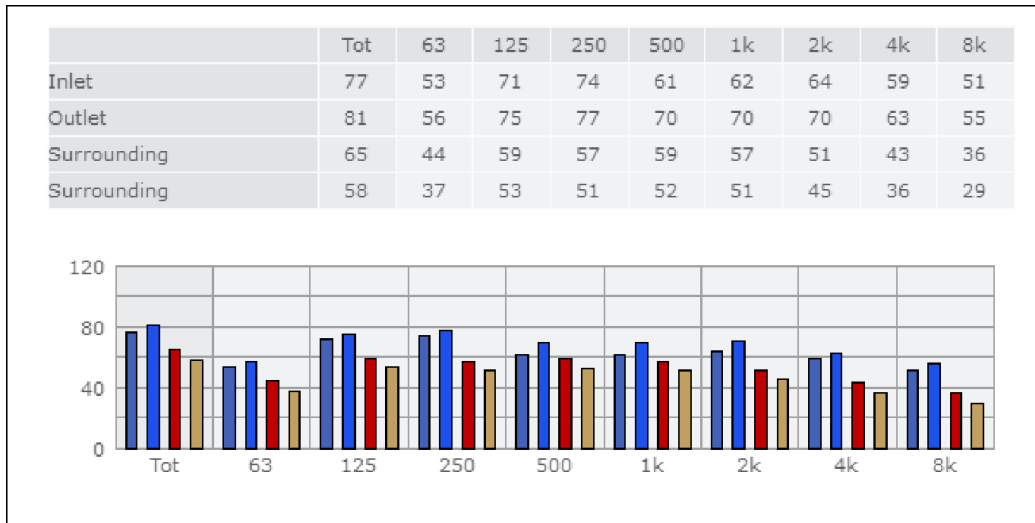
## Technical data

Parameter	Value	Unit
Voltage	230	V
Phase	1	~
Frequency	50	Hz
Power	0.41	kW
Current	2.1	A
R.p.m.	24	r/s
Max. temperature of transported air	40	°C
Max. temperature of transported air when speed-controlled	40	°C
Sound pressure level at 3 m	57	dB(A)
Length	642	mm
Width	643	mm
Height	357	mm
Weight	25.5	kg
Enclosure class, motor	44	IP
Insulation class, motor	F	
Capacitor	12	µF
Duct connection	600x300 mm	

Diagrams



Sound



**Parameter**

Distance: 3.000  
 Propagation type: Hemi-spherical  
 Equivalent absorption area: 20.00

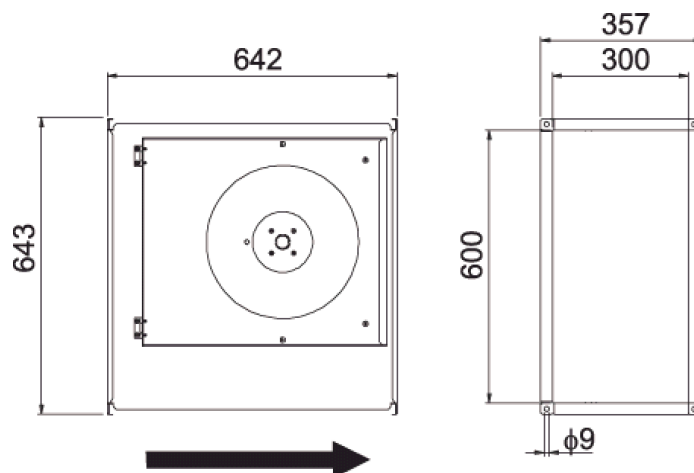
**Checked point**

Flow 1641.367m<sup>3</sup>/h  
 Static pressure 311Pa

**Working point**

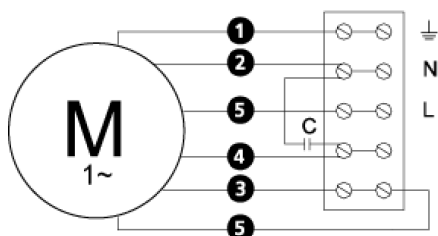
Flow 1642.298m<sup>3</sup>/h  
 Static Pressure 312Pa  
 Power 0.4kW  
 Speed 0r/s  
 Current 2.07A  
 Voltage 230V  
 Efficiency 35.472%  
 SFP 0kW/m<sup>3</sup>/s

## Dimensions



## Wiring diagram

4040005



- (M) = Fan Motor
- (M1) = Fan Motor
- (M2) = Fan Motor
- (M3) = Rotor Motor
- 1 = Yellow/Green
- 2 = Black
- 3 = Blue
- 4 = Brown
- 5 = White (TW)
- 6 = Orange
- 7 = Grey
- 8 = Red
- 9 = Green
- 10 = Violet

## Accessories

ETFV-94A  
FRE 6  
VRDE 3  
VRS 4,0  
VRTE 3

## Electrical accessories

FLR 600x300  
DS 600x300  
LDR 600x300